

May  
2019



**ST JOHN'S METHODIST CHURCH  
WHITCHURCH**

## Message from the Manse



Dear Friends,

There are some who say "age is just a number". I try and remember that sometimes when I'm being overtaken at Erddig Parkrun by Peter Norman, approaching his 82nd Birthday - he usually finishes just ahead of me, despite giving me about 35 years!

When it comes to buildings of course, the numbers might not have the same impact - I found it rather odd for example while living in St. Helens that some houses that had been built less than 40 years before were being pulled down - while others, including the one I lived in on a neighbouring street, had been going for twice that and showed no sign of stopping. Though of course even buildings are not immune to time.

I write this in the week of the dreadful fire at Notre Dame Cathedral in Paris, where it looked like an iconic 850 year old building, a century or more in the making, could be lost in an afternoon. Ironically, the cause may well be related to the ongoing restoration work attempting to repair the crumbling masonry of the cathedral. It was amazing to see pictures of the interior after the fire - and there, prominent above the altar, was the Cross, still shining bright. God willing, Notre Dame will endure - and maybe as well people will remember how it is a house of Worship, and not just part of the Paris Skyline.

As we celebrate our 140th Anniversary at St. Johns, as the current phase of the Building Project draws to a close, let's pray that we too will be a sign to our town - a house of worship, and a community that points the way to Jesus Christ - who is the same today, yesterday, and forever more.

God Bless

*Rob*

## Steward's Letter



Dear Friends,

The church has been the scene of much activity over the last few weeks as the Disabled Access gradually takes shape. Thank you to those who have spent so much time at church sorting out all the problems as they have arisen. Thank you to everyone who has worked round the various difficulties and irritations; we will get there in the end.

One of the many good things about living in Whitchurch is how often the different churches work together. During Lent we have had the Lent lunches and the Lent course. On Maundy Thursday there will be a shared service hosted this year by the Beacon and on Good Friday there will be the Walk of Witness. Looking further ahead there will be a service in the park the day after Party in the Park. The Beacon will lead but it is hoped that other churches will contribute. Leading up to this as part of the 'Thy Kingdom Come' initiative they are holding 48 hours of prayer. It was so successful last year that they have extended the length this year. Many people found it a very powerful experience. Everyone is invited to take part so do sign up for one of their 1 hour slots later on.

Also on the theme of prayer, I know many of you have a heart for the Persecuted Church. It was suggested at the last Churches Together meeting that it is really important for us to get together to pray on this subject and so we plan to meet 4 times a year. Anton, from The Beacon, has had a good deal of experience leading such groups and is willing to lead at least initially. The first meeting will be on 2<sup>nd</sup> May 7.30 at The Beacon Office.

Finally, although I am writing this just before Easter and you will receive it after Easter, may I wish you a joyful Easter time.

God bless,  
Avril

## Anger and forgiveness

Oh! how we can all relate to these two little words that can cause so much heartache in our lives. Anger is a normal human response, sometimes it is acceptable to be angry if we see harm to another person or animal, but it is when it happens too often in our lives and is uncontrollable that the problems start.



As children we were all angry at times when we could not get our own wishes granted and sometimes this carries on into our adult lives. Hurtful and spiteful things are said in the heat of the moment that can get out of hand often, then when the anger subsides we reflect on it all.

This is when forgiveness has to become a part of the healing process, it is so difficult when both sides will not back down, apologise or try to move forward again.

Even Jesus himself became angry many times one example is the money lenders in the temple which caused him to rage. He was so often a rebel rouser at times when he had to be.!

He was always able to forgive though – even at his ending on the cross as he was dying, he called out, 'Father forgive them for they know not what they do.'

Anger is like a poison that begins within and unless we get rid of it, it festers and hurts us and becomes a much bigger problem than it was

Forgiving others is not a sign of weakness – a quote from Mahatma Gandhi says “Forgiveness is not an attribute of the weak but of the strong”.

Also not forgetting- but remembering without pain can help.

My mother was ever the peace maker in our family., At her funeral I chose 'Make me a channel of your peace,' and for a reading it was Blessed are the peace makers' I think she knew the way to live with others peacefully all her life.

I hope we can all learn to forgive – life is too short to hold grudges forgive others, it is often too late to do so..... .... Sheila Walwyn

## **Worship Review**

### **Background**

#### **Worship Review — Background**

In 2011 the Forward Together Group developed an objective for worship, which was:

*“Enrich worship – the overall aim is to be inclusive and provide a variety of styles of worship so that there is something for everybody, with a progression to a more contemporary style of worship.”*

Over the next few months those within the Pray, Think, Act group and Worship Committee are combining to reflect on and evaluate how our worship services are currently running.

The review will evaluate the degree to which we have achieved a balance of styles and a progression towards contemporary worship over the last 8 years. Have we been successful? Is the objective still relevant? It is surely the sign of a healthy church to evaluate ourselves regularly, to understand our strengths and weaknesses, and seek God’s will and purpose.

#### **The Review**

The starting point for the review will be to recognise the many strengths of our current worship. We are blessed with worship leaders, organists, a music group, overhead projection etc. The aim is to build on these strengths and continue to develop our worship. It’s important that we don’t plateau or become complacent with where we are now.

It is not the intention to propose any major changes, but rather to take small incremental steps towards a vision and strategy for worship. The intention is to be inclusive of everybody recognising we each have different personal preferences for style of worship, so the vision should articulate something for everyone, but with a clear sense that we are moving forward.

We do need to consider the different age groups in the church and how their tastes and preferences may be different, or in some cases the same. **This is where everyone – including those outside these**

**groups doing the review – needs to speak out.** There is no intention to alienate anybody, but there is also a desire not to frustrate those who would like to see a vision develop and then see progress towards achieving that vision.

Lucy Chidlow (Secretary of the Worship Committee) and Jenny Marston (Secretary of the Pray, Think, Act Group) have offered to lead the review work – reporting back to both groups.

So, over the next few months, if there's any worship thoughts or ideas you have about our service, **please do get in touch with us.**  
Some pointers to get you started:

- a) **Style of worship** – do you like the style of the services?  
What is it about them that makes you think this?
- b) **Practicalities of worship space** – are you able to worship practically speaking? Are there physical things that get in the way of worship? Does the worship space enable different styles of worship? Could the church be used more effectively in worship and, if yes, how?
- c) **Use of projector** – is it used effectively? Could it be used more or less? Are there people we could encourage to take on the role of projector and screen?
- a) **People to encourage to take part in a worship role**

*Lucy*

### **CHAPEL ANNIVERSARY SUNDAY LUNCH**

There will be a Sunday Lunch on the 5<sup>th</sup> May to celebrate our **140<sup>th</sup> Chapel Anniversary.**

The menu will be Turkey and Beef Salad followed by a selection of sweets.

The cost will be £8.

Please put your name on the list if you intend to come.

### ***Book Stewards for May***

5th Nancy Millington

12th No Service

19th May Arthan

26th Sarah Lunt



### ***MAY SERVICES AT ST JOHN'S***

5th Revd. Andrew Pratt

12th Christian Aid Service at St  
Alkmund's (10am)

19th Edna Parry (Holy Communion)

26th Rev Malcolm Lorimer



### **WORSHIP LEADERS FOR MAY 2019**

May 5th Rachel Dimelow

May 12th No Service

May 19th Lucy Chidlow

May 26th Lucy Chidlow

### *Spick and Spanners for May 2019*

May 2nd     Joan & Gordon Davidson & Eileen  
                  Grunner

16th     Ros Rawson & Sue Davies



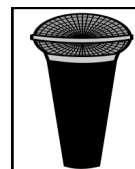
### *Sound System Operators for May 2019*

5th           Jim Walwyn

12th          NO SERVICE

19th          Gordon Davidson

26th          David Whiteley



### *Flowers Rota for May 2019*

May	5th.	Lynn Fowler
	12th	No Service
	19th	Sarah Lunt
	26th	Joan Cook
2nd June		Sheila Walwyn





**St John's Methodist Church Whitchurch**  
**Proudly Present**  
**A Celebration Concert following their recent**  
**Access Improvements**



**Featuring**  
**THE FARNDON BRASS BAND**  
**Supported by the Whitchurch Community Choir**  
**On Saturday 18th May 2019**  
**Starting at 7.30pm in the church**  
**Free Refreshments                      Raffle**  
**FREE ENTRY!                      Just a donation please!**  
**All proceeds to Access Funds**

## **CELEBRATION CONCERT**

Please come and support our Celebration Concert on May 18th.

We are welcoming the Farndon Brass Band for the first time, along with the Whitchurch Community Choir.

This will be the first time we will have hosted an event like this since we have had our new door, so we are anxious to see how things work out, particularly at the interval when we break for refreshments.

Because we will have a lot of people “backstage” as it were (35 musicians plus 30 singers), it is not going to be possible for everyone to access the back room for refreshments, even with a new door, so we are suggesting that the audience remain in the church where your refreshments will be served.

But come along and celebrate with us!

## **RAFFLE!!**

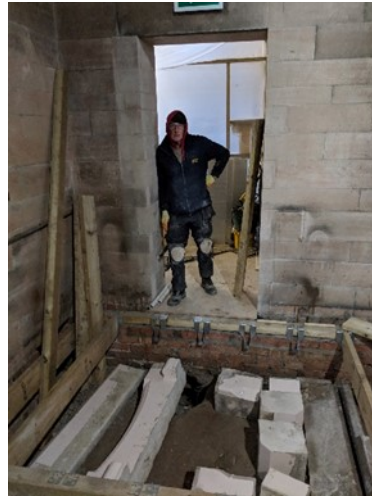
For the first time at St John's, we will be having a raffle which will be held at our Celebration Concert

As we know from our Coffee Mornings at the Civic, raffles are a very lucrative form of fund raising.

Please can I ask you to bring raffle prizes. We would prefer the non alcoholic prizes, but lots of boxes of sweets and chocolates as well as any other items would be most welcome!

The draw will be held during the interval.

## Our Fireplace in the Long Room



You may recall that we had to remove the fireplace in the Long Room to make way for our new door.

It was very carefully dismantled and stored at the top of the Long Room.

We were advised, that as the fireplace was an original artefact of the church, it could not be disposed of (i.e. thrown away! Or sold!)

Consequently, it was decided that the fireplace should remain on the premises and retained for future generations.

We had the ideal opportunity when we were having new floors installed, so that is where it is stored, under the floorboards along with the inscription shown on the opposite page.

I wonder who will find our fireplace, in, say, 150 years time? I wonder what they will think?





Before



In it's Resting Place

## ORIGINAL FIREPLACE 1879

This fireplace was removed from the Long Room in April 2019.

We believe it to be one of the original artefacts of this church, St John's Methodist Church in Whitchurch, North Shropshire.

It has been stored underneath this floor to preserve it for future generations to come.

God Bless!

The Stewards of this Church, 9th April, 2019

## Then and Now

We met and we married a long time ago,  
We worked for long hours and wages were low.  
No telly, no bath, oh yes it was hard  
And just one cold tap way up the yard.

no holidays abroad, no carpets on floors,  
We'd fuel on the fire and never locked doors!  
Our children arrived - no pill in those days,  
And we brought them all up without welfare aids.

No Valium, no drugs and no LSD,  
We cured our pains with a good cup of tea.  
If any were sick, they were treated at once,  
Not 'fill in this form and return in six months.'

No vandals or burglars – there was nothing to rob,  
In fact we were rich with a couple of bob!  
People were happy in those far off days,  
Kinder and caring in so many ways.

Milkmen and postmen would whistle and sing,  
And a night at the flicks was a very big thing.  
We all had our share of trouble and strife  
But we just had to face it and get on with life.

And now as we look back through so many years,  
We don't dwell on bad times, the troubles and tears,  
We remember the blessings of family accord  
And give thanks to God our Father and Lord.

Ruby Alexander

### **Café Church**

Our next Café Church is at St. John's on 23<sup>rd</sup> May starting at 7.30pm. It will be led by Jenny Marston and Lucy Chidlow (while Rob Weir is on Sabbatical). Come along and enjoy an informal discussion on the topic of persecuted Christians over coffee and cake! You will be most welcome.

### **TEA & COFFEE ROTA**

May	5th	Sunday Lunch - No Coffee
	12th	No Service
	19th	Sheila Latham & Dot Charlesworth
	26th	Ruth Dawson & Einwen Kelly

### **Thank You**

We had a good time of fellowship on Saturday 30<sup>th</sup> March 2019 at the Coffee Morning. Thank you for all the Donations received that day and subsequently. So far these have amounted to £1,825.

## St. John's Methodist Church



### Midday Concerts

Starting at 12 noon in the Church

On Wednesday 1st May

And every Wednesday until June 5th

Each Concert will last for around 50  
minutes

And be followed by refreshments in the  
Church rooms.

More information is given on the pages  
opposite, in the Whitchurch Herald and  
on the town and church websites,

Or contact Ruth Mulliner

## Midday Concert Programme 2019

**May 1st** Bill Webb & Russ Symonds

**May 8th** Lucy Chidlow & Olivia Field-Williams - mezzo / sopranos + a selection of poetry by the St John's Poets.

**May 15th** The Tither Recorder Ensemble + Helen & Vic Trigg and Rachel Dimelow (Folk Music)

**May 22nd** Elaine Gollins (oboe)  
Christopher Jones (piano)  
John Gunton (violin) and  
Catherine Redfearn (flute)

**May 29th** Maurice Posniak with  
David Hack (Piano & Organ)

**June 5th** The White House School Choir  
With Helen & David Clarke



## **140<sup>th</sup> CHAPEL ANNIVERSARY**

**SUNDAY 5<sup>TH</sup> May 2019 10.30am.**

**Preacher: Rev. Andrew Pratt, Northwich.**

Rev. Pratt was a Minister in Nantwich a number of years ago, a hymn writer, he's written 71 hymns, 10 of which are in Singing the Faith. He has written and contributed to many books relating to hymns and worship. The latest in 2017 with Jan Berry when he edited and contributed to Hymns for Hope & Healing. Prior to becoming a Supernumerary Minister, Andrew was a Tutor and Acting Principle of Hartley Victoria College, Manchester. Our own Minister trained under his ministry.

Please make an effort to support this Service.

### **President's Visit**

Our Chair of District, the Rev Peter Barber retires at the end of this Methodist year. A leaving service is being held in our Circuit for the whole of the District on Sunday 2<sup>nd</sup> June at 4.30pm at Alsager. The Preacher is the President of the Conference the Rev Michaela Youngson.

It would be good for our church to be represented.



## A New Opportunity

It's not very often that a church grows and increases in size!

We are very fortunate to have an unusual dilemma -our church has a new space- so, what do we do with it?

You will recall that the area outside our new door was originally used by the Music Group as well as for storage.

We now have a blank canvas -a new space, a new opportunity.

But we also have a problem.

### WHAT SHALL WE DO WITH IT?

Church members are invited to put their thinking caps on to come up with suggestions.

### **Notification of Church Annual General Meeting**

The Annual General Meeting this year will be held after the morning service on Sunday 26<sup>th</sup> May. Please could anyone submitting a report send it to me by 18<sup>th</sup> May so that they can be collated into a booklet for the meeting.

Many thanks

Briony Myles-Hook

Church Council Secretary.

### **Thank You**

We had a good time of fellowship on Saturday 30<sup>th</sup> March 2019 at the Coffee Morning. Thank you for all the donations received that day and subsequently. So far, these have amounted to £1825

### **12th–18th May Christian Aid Week: 'All mums should live'**

Sierra Leone is the world's most dangerous place to become a mum. Every day 10 women die from giving birth. In Sawula district, the community struggle with a clinic which has no electricity and only two delivery beds.

Jebbeh is heavily pregnant but as her baby grows, it's not joy that fills her heart, but fear. When Jebbeh's sister Fatmata went in to labour, there were so few ambulances that Fatmata had no choice but to walk for three hours under the baking sun, to the nearest hospital. The journey was long and with every step Fatmata struggled to keep walking.

Jebbeh told us: 'My sister was crying out with hunger. She died on the side of the road. She never gave birth.'

This Christian Aid Week, together, we can make childbirth safe for mums

and babies. Through our gifts and prayers, we can help give the world's poorest mums a chance to live.

### **Stand with mums**

Christian Aid Week begins on the 12<sup>th</sup> with a United Service (no morning service at St John's on that day) at 10.30 am at St Alkmund's. Bob Tweddle, a Christian Aid volunteer teacher, who is involved in helping Whitchurch Junior school with their Global Neighbours Bronze Award, will be speaking about Christian Aid projects.

Our church is raising money by helping with a House to House collection in Whitchurch. We still have some roads which we do not have collectors for. If you are able to help either by delivering or collecting more roads or by offering to help for the first time, please contact me on 664210.

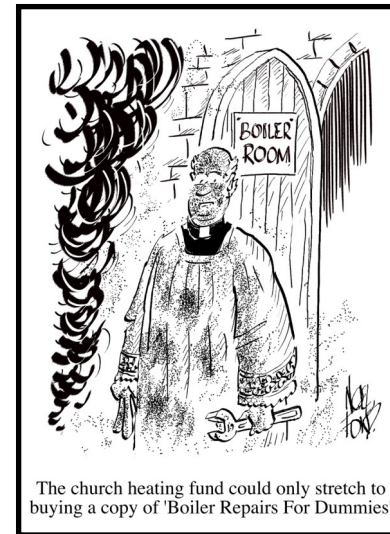
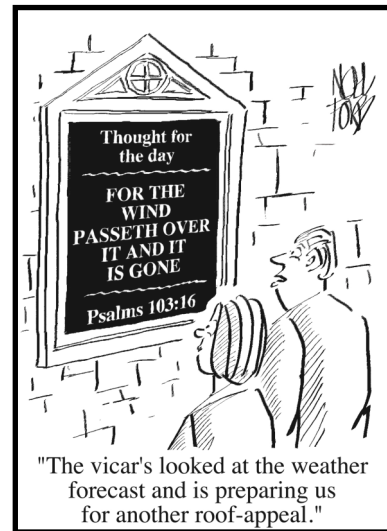
Will you be a partner for change? If our church raised £300, it could help provide a new delivery bed so more mums like Jebbeh can deliver their babies safely.

Envelopes for the House to House collection will be at the back of St John's on the 28<sup>th</sup> April and 5<sup>th</sup> May for deliverers and collectors to take away.

Helen Trigg

### **Pray, Think, Act Meeting**

The next "Pray, Think, Act" meeting is on Thursday 16<sup>th</sup> May at 7.30pm at Glebe House (home of Michael & Ruth Mulliner). As always, everyone is very welcome to come along - we would love to see you there. Over the last few meetings we have discussed how best to make prayer central to our church life, which has sparked initiatives such as the Prayer Triplets and Prayer Chains - look out for more information on how this will be developed. We have also discussed a Worship Review (see article from Lucy), Café Church and undertaking another Healthy Churches Questionnaire later this year in September. If you would like any further information on any aspect of the Pray, Think, Act group, please feel free to have a chat with me at any time. We look forward to meeting on 16<sup>th</sup> May - if you aren't able to join us, please do pray for the group, it would be very much appreciated.



## ACCESS WORKS

Well, we nearly made it! But it was not to be!

I really expected this article in the May Newsletter, 2019, to be a reflective one -an article when we were able to look back on a job well done.

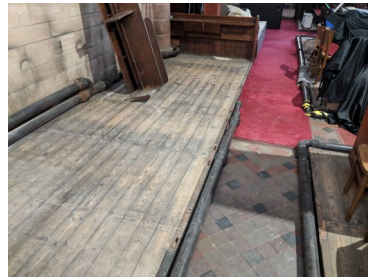
I can hear you ask now - how has it happened? Is it costing us more money?

Firstly, there have been problems with supplies. Indeed the Contractor is still waiting for certain things to arrive. The quarry hasn't provided the correct stone at the correct time and some of the light fittings won't be available for another six weeks.

So the latest date I can give you is Friday 5th May, and even then the work is likely to roll over into the following week.

Is the delay costing us more money? No, not one penny more! The extra costs are being born by the Contractor.

So please be patient. It will be worth it!



**JUST A FEW PICTURES FROM THE LAST 16 WEEKS**

# **ST JOHN'S METHODIST CHURCH**

## **ACCESS PROJECT**

### **FORMAL OPENING EVENT**

#### **FINAL DETAILS TO BE RELEASED SHORTLY**

**An opportunity to meet some of  
our sponsors and supporters.**

**Come along and view some of the  
photographs and documents show-  
ing our church from years long  
passed.**

**Meet with people who worked on  
our project.**



# OPEN FARM SUNDAY

## BUT ON A MONDAY !!

Graham & Rachel Dimelow

Would like to invite members of St John's and your families to join us  
on farm on

Monday 10<sup>th</sup> June

5.00pm to 8.00pm

Our dairy farm, in Chorlton Lane, Malpas, will be open for a short period on Monday 10<sup>th</sup> June to give you an opportunity to visit a working dairy farm.

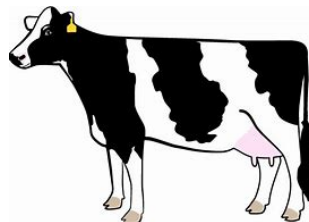
See some milking taking place and meet the animals. We can talk you through the process from calf to cow to milk and answer questions.

All ages are welcome.

If you would like to come along then please give us a call on 01948 860717 to book your places.

We look forward to welcoming you to our home.

Graham & Rachel





### **Regular Church Activities**

Mondays 9:30-11:30am Parents & Toddlers (Term time)

Thursdays 7pm: Music Group Practice

1st/3rd Tuesdays at 7.30pm: Bible Study at 7 Queen's Road

1st/3rd Thursdays at 7:30pm - Prayer Meeting at St. John's

2nd Wednesday of the month - 2pm: Bible Study at St. John's

4th Thursday of the month - 7:30pm: Cafe Church

### **MAY DATES FOR YOUR DIARY**

Every Wednesday in May-Midday Concerts

Sunday 5th May	Sunday Anniversary 140 years & Sunday Lunch
----------------	---

Sunday 12th May	United Service for Christian Aid at St Alkmund's at 10.30am.
-----------------	--

Sun 12th May-Sat 18th May Christian Aid Week

Thursday 16th May	Think, Pray Act At Glebe House 7.30pm
-------------------	---------------------------------------

Saturday 18th May	Celebration Concert to open our new refurbishments. With Farndon Brass Band & Whitchurch Choir
-------------------	--

Sunday 26th May	Church AGM.
-----------------	-------------

### **June 2019 Newsletter**

Please let Vic Trigg have all your submissions for the next Newsletter by 26th May.

*The proceeds from advertising in this magazine will be used solely for 'Access for All' improvements to our church. Inclusion of an advertisement in this magazine does not imply an endorsement of the products or services of the advertiser by St. John's.*

**BENJAMIN'S CAFÉ &  
DELI**



Delicious Breakfasts, Lunches & Brunches at good prices.

We offer freshly prepared food from our deli, to eat in our café or to take out.

**3 High Street, Whitchurch, SY13 1AW**

**Tel: 01948 664726**



**W**HITCHURCH  
**P**HOTOGRAPHY

**FOR ALL YOUR  
PHOTOGRAPHIC NEEDS!**

**01948 664 664**

**Weddings, Passports,  
Studio Photoshoots,  
Printing, Framing and  
Canvases**

**whitchurchphoto@gmail.com**

***May***

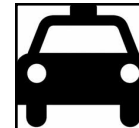
The following drivers are available during March to transport you to the services. Please 'phone before 9:30am.

May 5th Brian Faulkner

12h Hazel Nimmo

19th Jim Walwyn

26th Sheila Latham



## BARLOWS

Your local electrical retailer

Est in 1948 By  
Thomas Clifford Barlow,  
We pride ourselves on great  
customer service

HIGH STREET  
WHITCHURCH

01948 662463

[www.barlows-electrical.co.uk](http://www.barlows-electrical.co.uk)



**HEALING THYME**  
**29 HIGH STREET WHITCHURCH**

Wide range of  
Complimentary Healthcare:

Herbal Remedies  
Supplements  
Skin Care  
Health Food  
Practitioners

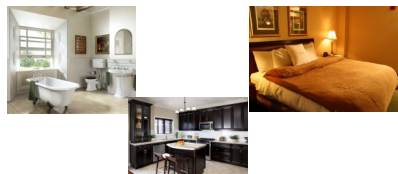
Tel: 01948 665565  
[www.healing-thyme.co.uk](http://www.healing-thyme.co.uk)

## SPLISH SPLASH

“Olde Worlde Charm”

A Family run  
Bathrooms Bedrooms &  
Kitchens Business based at 46a  
High Street Whitchurch

Speak to Vincent about your new  
project! Or re-vamp your existing  
kitchen, bathroom or bedroom



The Most Famous  
Bread & Cake Makers  
in Whitchurch!

## WALKERS

